

**pop rivet**

PRODUCT	DESCRIPTION	LBS/100
050-5002	for 1/2" plywood	.5
050-5003	for 5/8" plywood	.6

**steel/ply waler bracket**

PRODUCT	DESCRIPTION	LBS
055-0204	2 x 4 stl/ply waler bracket	2
055-0206	2 x 6 stl/ply waler bracket	2.5

**Z-tie holder**

PRODUCT	PACKAGING	LBS
054-0001	50/box	50

**waler ties**

PRODUCT	DESCRIPTION	PACKAGING	LBS
055-1004	2 x 4	100/box	13
055-1006	2 x 6	100/box	14

**strong back / stiff back tie**

PRODUCT	DESCRIPTION	PACKAGING	LBS
055-4004	2x4 + 2x4	100/box	17
055-6004	2x6 + 2x4	100/box	19
055-6006	2x6 + 2x6	100/box	21

**strong back J-hook**

PRODUCT	DESCRIPTION	PACKAGING	LBS
051-3044	2x4 + 2x4	each	1.5
051-3046	2x6 + 2x4	each	1.6
051-3066	2x6 + 2x6	each	1.7

Owens Supply Co | 630-596-9999 | fax: 630-596-9995 | www.owensupply.com

**base tie wedge**

PRODUCT	QTY	LBS
050-1003	250/pail	11



**short wedge bolt**

PRODUCT	QTY	LBS
050-1001	250/pail	24



**standard wedge bolt**

PRODUCT	QTY	LBS	PALLET
050-0001	250/pail	28	✓



pallet quantity: 5,000 pcs.

**long wedge bolt**

PRODUCT	QTY	LBS
050-0002	250/pail	37



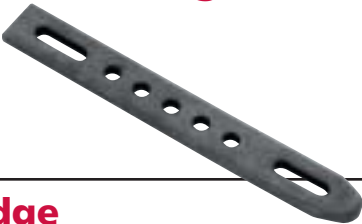
**lift bracket bolt**

PRODUCT	QTY	LBS
050-0003	50/box	8



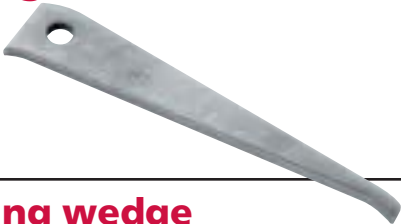
**adjustable wedge bolt**

PRODUCT	QTY	LBS
054-2012	100/box	18



**s-wedge**

PRODUCT	QTY	LBS
054-2011	250/pail	44



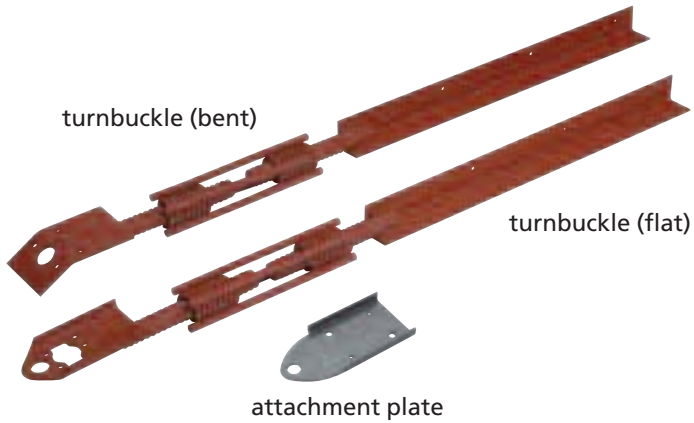
**curbing wedge**

PRODUCT	QTY	LBS
043-0012	each	.5



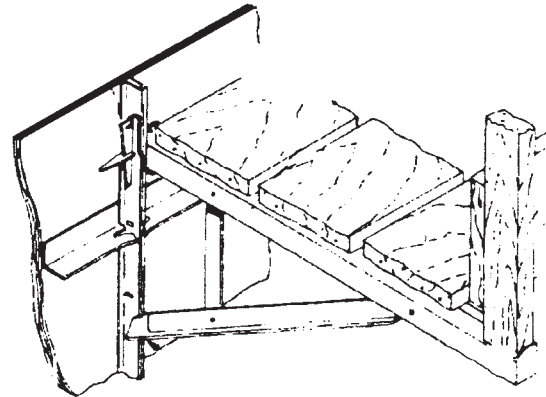
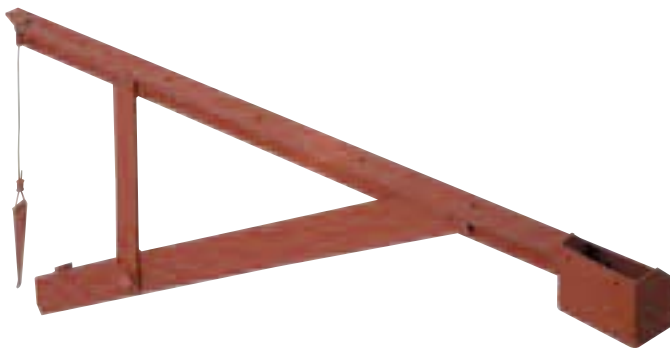
**turnbuckle form aligner**

PRODUCT	DESCRIPTION	LBS
051-1001	turnbuckle (bent)	7
051-1002	turnbuckle (flat)	7
051-1000	attachment plate	1



**scaffold bracket**  
for steel/ply forming system

PRODUCT	LBS
055-0022	14



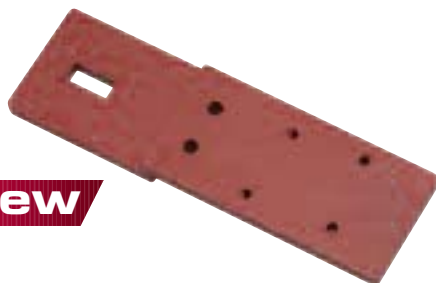
**steel/ply cap clip**

PRODUCT	QTY	LBS
055-0002	100/box	8



**steel/ply brick ledge bracket**

PRODUCT	QTY	LBS
055-2004	each	1



**new**

Owens Supply Co | 630-596-9999 | fax: 630-596-9995 | www.owensupply.com

## standard gang loop tie

ultimate load **4500 lbs** safety factor rating **2.0 to 1 (2250 lbs)**



PRODUCT	SIZE	QTY	LBS
022-0006	6"	100/box	24
022-0008	8"	100/box	27
022-0010	10"	100/box	29
022-0012	12"	100/box	31
022-0014	14"	100/box	35
022-0016	16"	100/box	36
022-0018	18"	100/box	38
022-0020	20"	100/box	41
022-0022	22"	100/box	44
022-0024	24"	100/box	46

■ Set-up charge of \$25.00 for fractional sizes, and call for quote.

## heavy duty gang loop tie

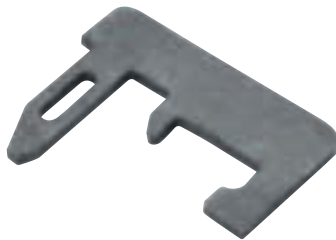
ultimate load **6000 lbs** safety factor rating **2.0 to 1 (3000 lbs)**



PRODUCT	SIZE	QTY	LBS
026-0006	6"	100/box	27
026-0008	8"	100/box	30
026-0010	10"	100/box	33
026-0012	12"	100/box	36
026-0014	14"	100/box	38
026-0016	16"	100/box	42
026-0018	18"	100/box	44
026-0020	20"	100/box	47
026-0022	22"	100/box	50
026-0024	24"	100/box	52

■ Set-up charge of \$25.00 for fractional sizes, and call for quote.

## gang form bolt



PRODUCT	QTY	LBS
050-2001	50/box	24

## wire S base wall tie

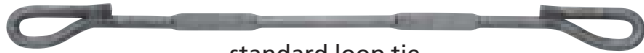
ultimate load **3000 lbs** safety factor rating **2.0 to 1 (1500 lbs)**



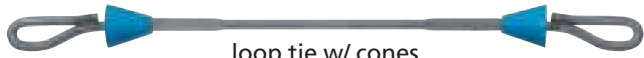
PRODUCT	SIZE	QTY	LBS
004-0006	6"	100/box	16
004-0008	8"	100/box	18
004-0010	10"	100/box	20
004-0012	12"	100/box	22
004-0014	14"	100/box	24
004-0016	16"	100/box	26
004-0018	18"	100/box	28
004-0020	20"	100/box	32
004-0022	22"	100/box	34
004-0024	24"	100/box	36

## standard loop tie

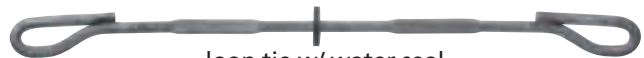
ultimate load **4500 lbs** safety factor rating **2.0 to 1 (2250 lbs)**



standard loop tie



loop tie w/ cones



loop tie w/ water seal

PRODUCT	SIZE	LBS	STANDARD	W/CONES	W/SEAL
020-0006	6"	17	100/box	100/box	100/box
020-0008	8"	18	100/box	75/box	100/box
020-0010	10"	22	100/box	75/box	100/box
020-0012	12"	24	100/box	75/box	100/box
020-0014	14"	27	100/box	50/box	100/box
020-0016	16"	29	100/box	50/box	100/box
020-0018	18"	32	100/box	50/box	100/box
020-0020	20"	34	100/box	50/box	100/box
020-0022	22"	36	100/box	50/box	100/box
020-0024	24"	38	100/box	50/box	100/box

■ Set-up charge of \$25.00 for fractional sizes, and call for quote.

■ 1-1/2" & 2" breakback available by special order

## heavy duty loop tie

ultimate load **6000 lbs** safety factor rating **2.0 to 1 (3000 lbs)**



heavy duty loop tie



loop tie w/ cones



loop tie w/ water seal

PRODUCT	SIZE	LBS	STANDARD	W/CONES	W/SEAL
024-0006	6"	20	100/box	100/box	100/box
024-0008	8"	22	100/box	75/box	100/box
024-0010	10"	25	100/box	75/box	100/box
024-0012	12"	28	100/box	75/box	100/box
024-0014	14"	31	100/box	50/box	100/box
024-0016	16"	33	100/box	50/box	100/box
024-0018	18"	36	100/box	50/box	100/box
024-0020	20"	40	100/box	50/box	100/box
024-0022	22"	42	100/box	50/box	100/box
024-0024	24"	44	100/box	50/box	100/box

■ Set-up charge of \$25.00 for fractional sizes, and call for quote.

■ 1-1/2" & 2" breakback available by special order

Owens Supply Co | 630-596-9999 | fax: 630-596-9995 | www.owensupply.com

## X-flat standard wall tie

1/4" break back – rolled edges

**ultimate load** 6000 lbs **safety factor rating** 2.0 to 1 (3000 lbs)



PRODUCT	SIZE	QTY	LBS	PALLET
001-0004	4"	100/box	20	
001-0006	6"	100/box	24	✓
001-0008	8"	100/box	29	✓
001-0010	10"	100/box	34	✓
001-0012	12"	100/box	40	✓
001-0014	14"	100/box	44	
001-0016	16"	100/box	48	
				pallet quantity: 10,000 pcs.
001-0018	18"	50/bundle	37	
001-0020	20"	50/bundle	39	
001-0022	22"	50/bundle	42	
001-0024	24"	50/bundle	43	
001-0026	26"	50/bundle	45	
001-0028	28"	50/bundle	47	
001-0030	30"	50/bundle	50	
001-0032	32"	50/bundle	52	
001-0034	34"	50/bundle	54	
001-0036	36"	50/bundle	56	
001-0038	38"	50/bundle	60	
001-0040	40"	50/bundle	63	
001-0042	42"	25/bundle	33	
001-0044	44"	25/bundle	35	
001-0046	46"	25/bundle	38	
001-0048	48"	25/bundle	41	

■ Set-up charge of \$25.00 for fractional sizes, and call for quote.

## X-flat heavy duty wall tie

1/4" break back – rolled edges

**ultimate load** 7000 lbs **safety factor rating** 2.0 to 1 (3500 lbs)



PRODUCT	SIZE	QTY	LBS	PALLET
002-0004	4"	100/box	29	
002-0006	6"	100/box	32	✓
002-0008	8"	100/box	37	✓
002-0010	10"	100/box	42	✓
002-0012	12"	100/box	48	✓
002-0014	14"	100/box	53	
002-0016	16"	100/box	59	
				pallet quantity: 10,000 pcs.
002-0018	18"	50/bundle	45	
002-0020	20"	50/bundle	47	
002-0022	22"	50/bundle	50	
002-0024	24"	50/bundle	52	
002-0026	26"	50/bundle	54	
002-0028	28"	50/bundle	56	
002-0030	30"	50/bundle	59	
002-0032	32"	50/bundle	61	
002-0034	34"	50/bundle	63	
002-0036	36"	50/bundle	65	
002-0038	38"	50/bundle	68	
002-0040	40"	50/bundle	70	
002-0042	42"	25/bundle	36	
002-0044	44"	25/bundle	38	
002-0046	46"	25/bundle	40	
002-0048	48"	25/bundle	43	

■ Set-up charge of \$25.00 for fractional sizes, and call for quote.

**"Elite" metal filler (all steel)**

PRODUCT	SIZE	LBS
058-0003	1" x 3'	7
058-0004	1" x 4'	9
058-0005	1" x 5'	11
058-0006	1" x 6'	13
058-0008	1" x 8'	18
058-0009	1" x 9'	21
058-0103	1-1/2" x 3'	8
058-0104	1-1/2" x 4'	10
058-0105	1-1/2" x 5'	13
058-0106	1-1/2" x 6'	15
058-0108	1-1/2" x 8'	21
058-0109	1-1/2" x 9'	24
058-0203	2" x 3'	9
058-0204	2" x 4'	11
058-0205	2" x 5'	15
058-0206	2" x 6'	17
058-0208	2" x 8'	23
058-0209	2" x 9'	26

**"Elite" filler angle**

PRODUCT	SIZE	LBS
056-0003	3'	4
056-0004	4'	5
056-0005	5'	7
056-0006	6'	8
056-0008	8'	11
056-0009	9'	12

**"Elite" inside corner**



6"x 6" standard    4"x 4" standard    6"x 6" hinged

PRODUCT	LENGTH	LBS
<b>6" x 6" STANDARD</b>		
057-0603	3 ft.	27
057-0604	4 ft.	33
057-0605	5 ft.	42
057-0606	6 ft.	51
057-0608	8 ft.	65
057-0609	9 ft.	72
<b>4" x 4" STANDARD</b>		
057-0403	3 ft.	20
057-0404	4 ft.	25
057-0405	5 ft.	31
057-0406	6 ft.	37
057-0408	8 ft.	46
057-0409	9 ft.	53
<b>6" x 6" HINGED</b>		
057-1603	3 ft.	25
057-1604	4 ft.	31
057-1605	5 ft.	42
057-1606	6 ft.	47
057-1608	8 ft.	59
057-1609	9 ft.	69

**"Elite" outside corner**



standard    hinged

PRODUCT	LENGTH	LBS
<b>STANDARD CORNER</b>		
059-0003	3 ft.	9
059-0004	4 ft.	12
059-0005	5 ft.	14
059-0006	6 ft.	18
059-0008	8 ft.	25
059-0009	9 ft.	28
<b>HINGED CORNER</b>		
059-1003	3 ft.	9
059-1004	4 ft.	15
059-1005	5 ft.	19
059-1006	6 ft.	23
059-1008	8 ft.	25
059-1009	9 ft.	27

■ Bay corners available by special order



## EMI "Elite" series steel/plywood panels & fillers

compatible with other steel/plywood systems



- Tie slots on 12" centers
- Wedge bolt slots on 6" centers
- Robotically welded to provide uniform, high strength welds
- 1/2" HDO Plywood with "B" facing and "B" backing
- Handles for carrying ease
- Complete range of filler and corner sizes available
- Easily added to your current set
- Made in the United States

- Replacement facing available on page 30

PRODUCT	SIZE	LBS
149-2409	24" x 9'	88
149-2209	22" x 9'	84
149-2009	20" x 9'	78
149-1809	18" x 9'	72
149-1609	16" x 9'	67
149-1409	14" x 9'	61
149-1209	12" x 9'	59
149-1009	10" x 9'	52
149-0809	8" x 9'	48
149-0609	6" x 9'	44
149-0509	5" x 9'	42
149-0409	4" x 9'	39
149-2408	24" x 8'	75
149-2208	22" x 8'	70
149-2008	20" x 8'	66
149-1808	18" x 8'	63
149-1608	16" x 8'	59
149-1408	14" x 8'	54
149-1208	12" x 8'	50
149-1008	10" x 8'	46
149-0808	8" x 8'	42
149-0608	6" x 8'	39
149-0508	5" x 8'	37
149-0408	4" x 8'	34

PRODUCT	SIZE	LBS
149-2406	24" x 6'	58
149-2206	22" x 6'	54
149-2006	20" x 6'	50
149-1806	18" x 6'	47
149-1606	16" x 6'	44
149-1406	14" x 6'	40
149-1206	12" x 6'	36
149-1006	10" x 6'	34
149-0806	8" x 6'	32
149-0606	6" x 6'	28
149-0506	5" x 6'	27
149-0406	4" x 6'	25
149-2405	24" x 5'	48
149-2205	22" x 5'	46
149-2005	20" x 5'	42
149-1805	18" x 5'	39
149-1605	16" x 5'	37
149-1405	14" x 5'	35
149-1205	12" x 5'	33
149-1005	10" x 5'	30
149-0805	8" x 5'	26
149-0605	6" x 5'	25
149-0505	5" x 5'	23
149-0405	4" x 5'	21

PRODUCT	SIZE	LBS
149-2404	24" x 4'	42
149-2204	22" x 4'	38
149-2004	20" x 4'	35
149-1804	18" x 4'	32
149-1604	16" x 4'	30
149-1404	14" x 4'	28
149-1204	12" x 4'	26
149-1004	10" x 4'	24
149-0804	8" x 4'	22
149-0604	6" x 4'	19
149-0504	5" x 4'	18
149-0404	4" x 4'	17
149-2403	24" x 3'	32
149-2203	22" x 3'	29
149-2003	20" x 3'	27
149-1803	18" x 3'	26
149-1603	16" x 3'	24
149-1403	14" x 3'	22
149-1203	12" x 3'	20
149-1003	10" x 3'	18
149-0803	8" x 3'	16
149-0603	6" x 3'	15
149-0503	5" x 3'	14
149-0403	4" x 3'	13